

FIRST FLOOR PLAN

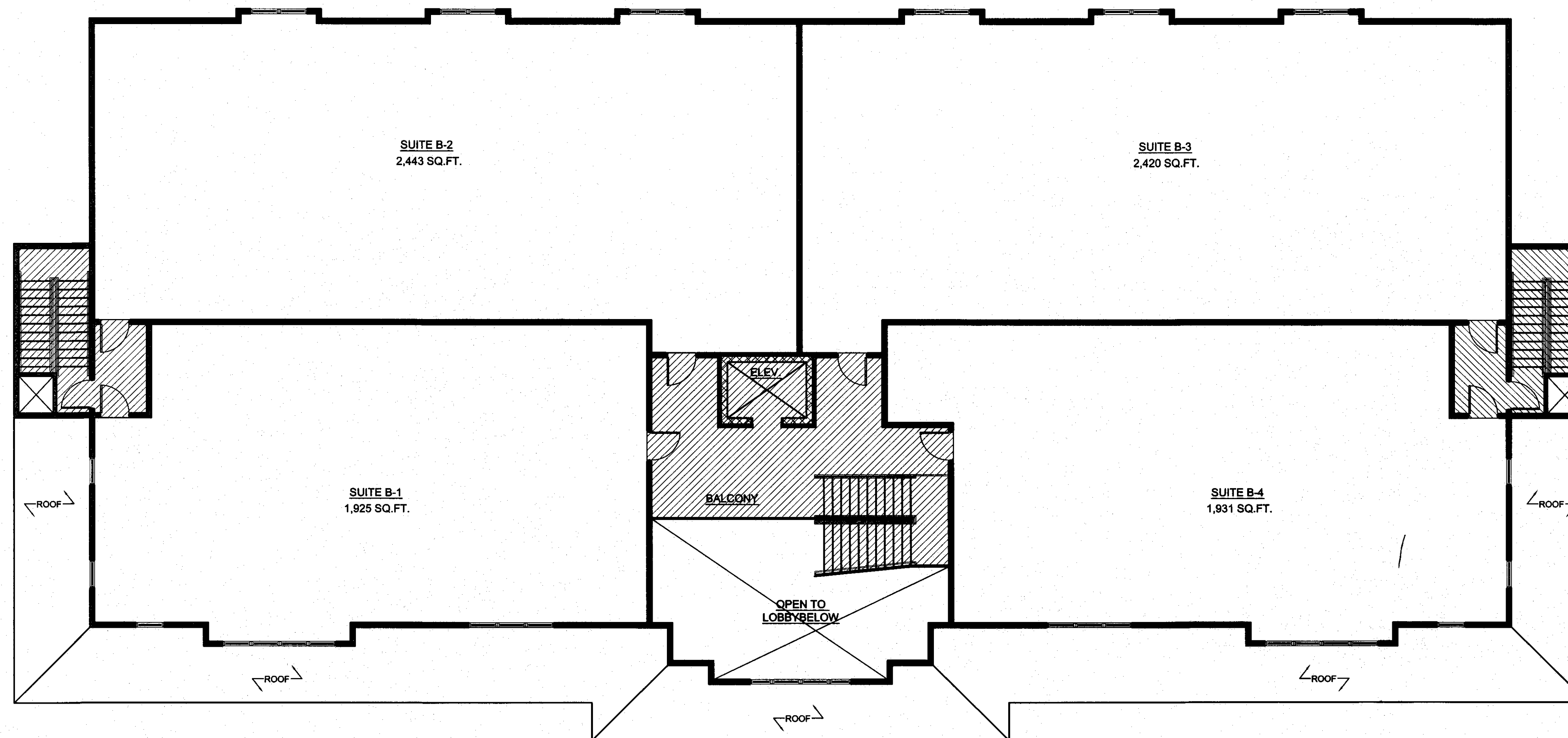
1/8"=1'-0"

TOTAL OFFICE:
 1ST FLOOR 8,561 SQ.FT.
 2ND FLOOR 8,719 SQ.FT.
 TOTAL 17,280 SQ.FT.

TOTAL COMMON SPACE:
 1ST FLOOR 1,642 SQ.FT.
 2ND FLOOR 951 SQ.FT.
 TOTAL 2,593 SQ.FT.

TOTAL BUILDING AREA:
 19,873 SQ.FT.

	COMMON BUILDING SPACE
	OFFICE SPACE
	NON-USABLE SPACE



SECOND FLOOR PLAN

1/8"=1'-0"

I HEREBY CERTIFY THAT THESE PLANS
 CONSTITUTE A CORRECT REPRESENTATION
 OF THE ABOVE REFERENCED PROPERTY
 AS OF 2/18/08

[Signature]
 HARRY S. HARPER
 DATE 2/19/08

CONDO DOCUMENTS

PROPOSED OFFICE BUILDING FOR
 GALLOWAY MEDICAL ARTS CENTER
 GALLOWAY TOWNSHIP, NEW JERSEY

REVISIONS
 2/18/08

COM. NO. 05/24
 DRAWN BY E.K.
 CHKD. BY JSH
 DATE 10/14/05

SHEET NO.

1 of 1



HARRY S. HARPER
 ARCHITECT & PLANNER
 154 NEW JERSEY AVENUE
 ARBESCON, N.J. 08001
 PHONE: (609) 645-7566
 HARRY S. HARPER
 N.J. A.I. 08600
 N.J.P.P. U 03222